

# The Edith Borthwick School Weekly Update

## Friday 8<sup>th</sup> November 2024

### Head's Update

Welcome to our last weekly newsletter - we have decided to make the newsletter monthly in the future! We don't want to 'bombard' you with information and we know from feedback that parents find it helpful to have updates sent via DOJO, so that information is easy to locate. We know that the weekly newsletter sometimes repeats this information so going forward, **we will send a newsletter at the end of each month, detailing a roundup of everything that we have done over the month! Our next newsletter will be sent at the end of November.**

This week, **we have been looking at 'Bonfire Night' as a theme** with lots of classes doing work around this. I took a visitor into Rhino 2 this morning and they were very impressed by the glitter firework pictures!

On Wednesday, **we held a coffee morning for the parents of learners who started with us in September.** It was lovely to be able to have quality conversations with the parents and they got the opportunity to meet the SLG, Tasha (our Family Worker Manager), Gary (our Careers Lead), and Stephanie (our Chair of Governors).

This morning was **our monthly coffee morning for parents.** The parents and Tasha discussed communication and behaviour, as well as other things. The group is really lovely and supportive, and is a mix of parents who are new to the school and some whose children have attended the school for a long time. **Come along and join us on Friday 6<sup>th</sup> December if you fancy a chat with other parents who understand what you are going through.**

**On Sunday, it is Remembrance Sunday, and Monday is Armistice Day,** so we have been selling poppies and remembering the armed forces who have fought to protect our country.

**Next Friday is Children in Need so we will be wearing spots, superhero costumes or official merchandise.** Please send in a donation for dressing up (suggested amount £1). We are also selling the furry ears in school if you would like some!

I hope that you all have a lovely weekend.

Best wishes,

Maggie

### Attendance reminders

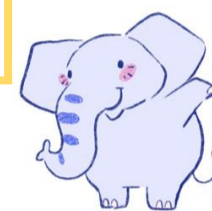
If your child will be absent from school for any reason, **please ring the absence line (option 1) before 9.00am.**

### Dates for your diary

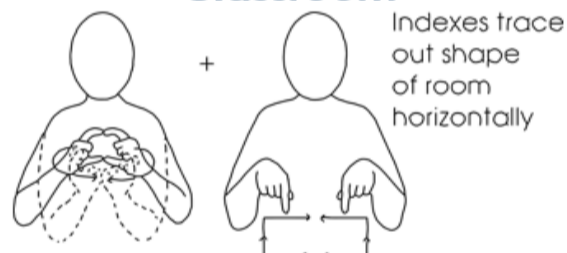
**Children in Need**  
Fri 15<sup>th</sup> November

**FOEBS AGM**  
Wed 27<sup>th</sup> November at 9.30am

### Edie's corner



#### Signs linked to Sam's Class of the week Classroom



#### Toast



#### Pancakes



#### Christmas



#### Word of the Week



### Edie's joke of the week

**What do cats wear to bed?**  
Paw-jamas!

# The Edith Borthwick School Weekly Update

## Class of the week

### Lemur class

Sam, Class teacher says...

Lemur class have had an amazing first half term! We have enjoyed interacting with our peers and adults within the **classroom** and have settled in wonderfully!

This term's topic is '**Me and my world**'. We have explored our senses, people who help us, our friends, and healthy eating. We have engaged in some fun activities including shopping, role play and being able to dress up and practice being firefighters, police officers and nurses!

We have continued to enjoy our cooking sessions, practising skills of 'cutting' and 'spreading' to make pizzas, **toast** and **pancakes**. We have also developed our likes and dislikes of various smells and tastes during our food tasting activities.

In 'communication', we have been focusing on letter formation, colourful semantics and attention bucket. In 'thinking and learning', we have been looking at ordering numbers, addition, shape and repeated patterns.

Over the next following weeks, we are going to be **focussing on weather, environments, transport and celebrations such as Diwali and Christmas!**



## Elsewhere around the school

**Tortoise class** enjoyed baking Halloween pumpkins, bats and witch hats and exploring and carving pumpkins before half term!



**Flamingo class** said goodbye to Georgia as she began her maternity leave before half term! In class, we also completed lots of Halloween challenges including bobbing for spooky apple, searching for creepy Halloween items and building ghost cup towers!



## Join our monthly lottery!

'**Your School Lottery**' was set up to raise money and make a difference for our amazing learners - for every ticket you play, 74.2% goes to our school and prizes!

**It's only £1 per ticket with the chance to win a £25,000 grand prize!**

[Your School Lottery](#)

**Thank you to everyone who chose to donate their winnings to our school!**