

The Edith Borthwick School Weekly Update

Friday 11th October 2024

Head's Update

Today's lovely sunny day reflects our theme for the week, which is **'Hello Yellow' for World Mental Health Day**. It was nice to see some of our learners and staff wearing yellow items yesterday in support! **Mental health and wellbeing is a big focus for us this year** for both our learners and our staff.

The sun this morning disguised how cold it was outside – my car said it was 1.5°C when I drove in! **Please make sure that learners have appropriate clothing for the colder days such as coats and hats etc.**

Our gardens and field were frosty this morning. **October 2024 is International Walk to School Month**, and **Living Streets are running their annual Autumn Street Safari**. This enables learners to search for and discover items on their walk to school, or within the school grounds. **It's completely free and this year, there is also an opportunity to win 10 x £35 Shoe Zone vouchers**. I know that it's not possible for many learners, but walking to school also ties in nicely with **our school aims to be green and live healthily**.

The Essex Local Offer Roadshows are back! The SEND Navigation Team, alongside representatives from Essex Family Forum, SENDIASS, Health, Education, Social Care and other organisations will be hosting four roadshows in October and November 2024 (one in each quadrant area). This is a chance for parents/carers/families to attend and ask any questions about special educational needs and disabilities. **We have heard positive feedback from parents who attended these roadshows last year** - the dates and venues this term are:

1. Mid Essex – 15/10, 9.30am - 12.30pm, Champions Manor Hall, South Woodham Ferrers
2. North East Essex – 23/10, 9.30am - 12.30pm, Brightlingsea Community Centre
3. South Essex – 5/11, 9.30am - 12.30pm, Hannakins Farm, Billericay
4. Mid Essex – 6/11, 9.30am - 12.30pm, Peter Kirk Centre, Stansted Mountfitchet

I hope that you all have a lovely weekend.

Best wishes,

Maggie

Attendance reminders

If your child will be absent from school for any reason, **please ring the absence line (option 1) before 9.00am**.

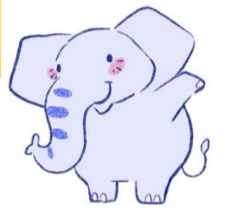
Upcoming dates

Halloween disco (daytime)
Thurs 24th October 2024

Non-pupil day
Fri 25th October 2024

Half term
Mon 28th October – Fri 1st November 2024

Edie's corner



Signs linked to Sarah and Danielle's Class of the week (See second page)

Year



Rainbow



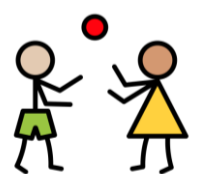
Garden



Swimming



Word of the Week



play

Edie's joke of the week

What's a crocodile's favourite game?

SNAP!

The Edith Borthwick School Weekly Update

Class of the week

Hippo class

Sarah and Danielle, Class teachers say...

We have made a fantastic start to our new school **year** in Hippo class, **fully embracing our topic of 'Me and my world'!**

So far, **we have learned some key vocabulary linked to our families, homes, gardens and hobbies.** Next week, we will be focusing on **healthy living, eating and exercise.**

One of our **favourite lessons is 'attention autism',** where we **develop our listening and attention skills.**

This week, the learners really enjoyed **some 'magic paintings'** and we **talked about the colours we had seen in a rainbow on our way to swimming.**

We have been so impressed with how well all of the children have settled in – they are following the routines and structures brilliantly!

Elsewhere around the school

Gatwick and Sea lion classes went to their wilderness session last Friday!

Gatwick class have had a busy week - we started making our filled rolls for staff lunches, explored creating our own fantasy creatures using 'Busy things', as well as doing some excellent communicating using different forms of AAC!



Orangutan class are learning about space this term and have made constellation art this week!



Wolf class have enjoyed listening to our sensory story 'The Colour Monster' - we enjoyed exploring the props linked to our emotions! These included feeling popping candy on our tongue for 'excited', and mixing lemonade and salt to make it explode like 'anger'! We also enjoyed making our very own colour monsters in our creativity session using paints in spray bottles.



Join our monthly lottery!

'Your School Lottery' was set up to raise money and make a difference for our amazing learners - for every ticket you play, 74.2% goes to our school and prizes!

It's only £1 per ticket with the chance to win a £25,000 grand prize!

[Your School Lottery](#)

Thank you to everyone who chose to donate their winnings to our school!