

February 2025

Head's update

February seems to have rushed by, especially with half term falling in the middle! It has been nice coming back to school this week and seeing our learners.

This month started with the Senior Leadership Group conducting learning walks around the school to look at aspects of the school improvement plan (SIP). It is always a privilege to see the lovely things that are going on in classes!

We have been running a number of opportunities for parents and carers this month:

- We are in the middle of our eight week information sessions for parents who have children who are new to the school
- Our therapy team have been running regular communication book training sessions
- We held our monthly coffee morning
- The SEND Careers Advisor for the school held drop-in sessions.

In the week before half term, **we were really fortunate to be offered the opportunity to work with a local artist for two days**, which was funded by Braintree District Cultural Education Partnership. Twelve of our classes had the opportunity to create art with Dale Connelly. There was an exhibition at the end of the second day, which was open to parents and carers. I'm sure that anyone who attended could appreciate how lovely our artistic meadow was! Have a look at the pictures on the following pages. Thank you to Dale and Judith, who offered us this opportunity.

In the same week, **we hosted six trainee teachers**. They had the opportunity to go into a variety of classes and see what teaching in a special school entailed. They were so complementary about what they saw and went away with lots of ideas and strategies!

Yesterday, **the Friends of Edith Borthwick School (FOEBS) met to look at fundraising opportunities** over the coming months. **We are looking to purchase a wheelchair accessible swing to go on our field. We are also going to start fundraising for a new floor for our popular sensory cabin**, as it has stopped working.

The rest of this term will be busy until we break up for Easter - coming up, we have:

- **World Book Day on 6/3**, where we are dressing up in book characters or fancy dress and reading and listening to stories
- **Red Nose Day on 21/3**
- **Easter egg hunts in the last week of term**
- **Easter discos on 2/4**
- **Parents' Evening on 2/4**

We have lots to look forward to and **will be sending out information about all of the above in due course!**

Please could I remind everyone that **the speed limit in our car park is 5 miles per hour. There is a pedestrian crossing at the front of the car park** and it is absolutely essential that cars are coming into that area very slowly. Thank you for your support with this.

Have a lovely weekend.

Best wishes,

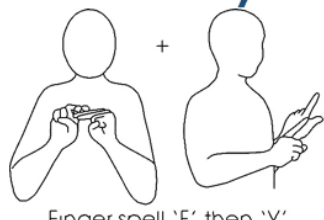
Maggie

The Edith Borthwick School Newsletter

Edie's corner

Signs of the month

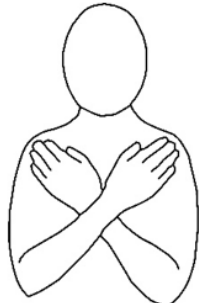
February



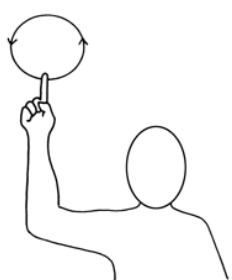
Holiday (half term)



Love (Valentine's Day)



Sun



Word of the month



Don't forget, **our monthly coffee morning**

takes place on

Friday 7th March 2025 at 9.30am!

Tortoise class have been doing an Africa-themed week and we have made Maasai pasta necklaces, and tasted fruit from the story Handa's Surprise!



Edie's jokes of the month

What happens when a lightning bolt hears a joke? It cracks up!

Why did the tree take up a hobby? It wanted to branch out!



Favourite Hobby/Activity of the Week

As part of our newsletter, we have a '**Favourite Hobby/Activity**' section so that we can include our staff and learners' favourite things!

For example, 'Favourite Hobby/Activity' might cover things such as:

- **Playing with pets**
- **Sensory** (favourite sensory item(s))
- **Physical** (special toy(s), book(s) or items that means a lot, or something special from a trip or holiday, or something from your culture/religion)
- **Hobby/Talent** (such as rock/penny/stamp collecting, dancing, train-spotting etc)

We welcome and appreciate all submissions, and we love to see and champion things that our learners love!

Please send any submissions to:
admin@edithborthwick.essex.sch.uk
for the attention of Emma Amos.

Eco club updates

The Eco club picked 3 areas to improve around the school, which are:

- Biodiversity
 - Waste
 - Energy

The Eco club will be taking part in the **Great Big School Clean** and are going litter-picking next term!

Eco tip

Get active and take part in different sports!

Join our monthly lottery!

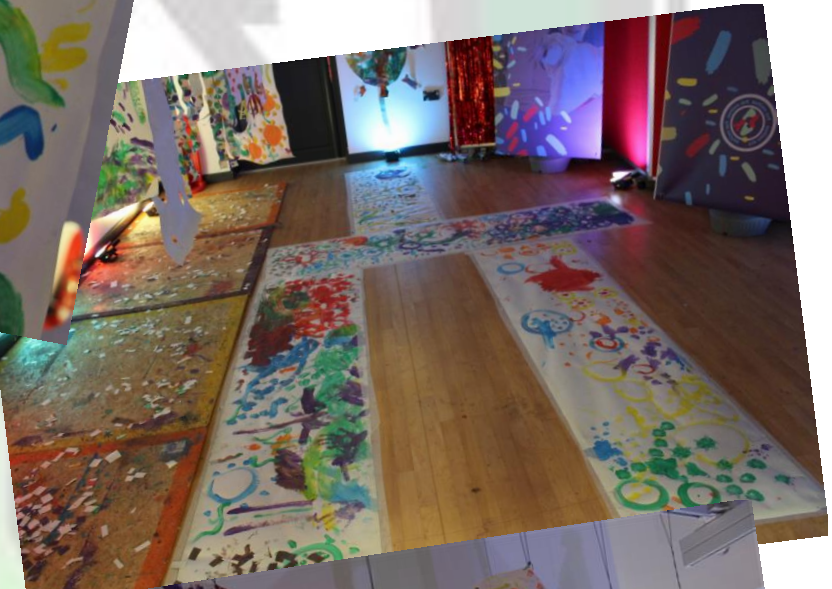
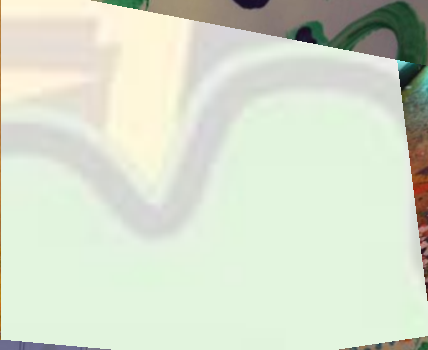
'**Your School Lottery**' was set up to raise money and make a difference for our amazing learners - for every ticket you play, 74.2% goes to our school and prizes! **It's only £1 per ticket with the chance to win a £25,000 grand prize!**

[Your School Lottery](#)

Thank you to everyone who chose to donate their winnings to our school!

At The Edith Borthwick School, we **r**espect, **e**ncourage, **a**chieve, **c**are, and **h**ave fun!

Art show



Art show



Art show

